



(270) 276-5671 [sales@logwell.com](mailto:sales@logwell.com) [www.logwell.com](http://www.logwell.com)

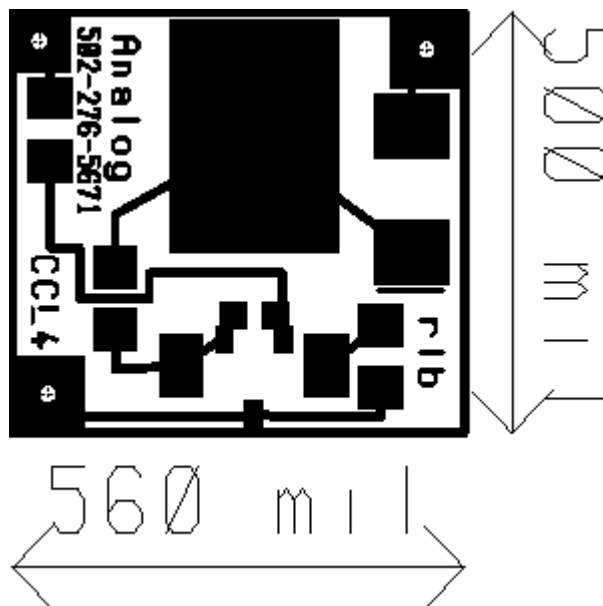
## Surface Mount CCL amplifier

**General Description** – This high temperature surface mount collar locator amplifier is designed to have high sensitivity over a wide range of line voltages and ambient temperatures. This amplifier includes a reverse voltage protection diode, and only needs a standard 6.8K 3 watt resistor to connect to the line.

- Operational from  $-55^{\circ}\text{C}$  to  $+185^{\circ}\text{C}$
- Operational at line voltages from 50V to beyond 200V

### ORDERING GUIDE

Surface mount CCL amplifier	CCL4HT
-----------------------------	--------



## ELECTRICAL CHARACTERISTICS

Parameter	Conditions	Temperature	Typ	Units
AC gain	1mV in; Vo @ output Line=50V, RI=6.8K	25°C	150	V/V
		125°C	125	
		185°C	60	
AC gain	1mV in; Vo @ output Line=120V, RI=6.8K	25°C	300	V/V
		125°C	210	
		185°C	125	
Supply current	Line=50V Line=120V	25°C to 125°C	2 6	mA

Aug 7, 2004  
 Copyright © 2004 *AnaLog Services, Inc.* and Robert Baer